

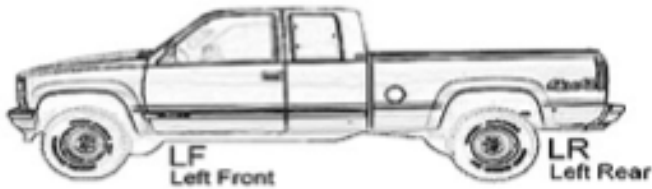
## FENDER FLARE INSTALLATION INSTRUCTION FORD F-150 15-UP

### Parts

Qty (1) Fender Flare Left Front (LF)  
Qty (1) Left Front Inner Piece (LF-L)  
Qty (1) Fender Flare Left Rear (LR)  
Qty (1) Fender Flare Right Front (RF)  
Qty (1) Right Front Inner Piece  
Qty (1) Fender Flare Right Rear (RR)

Qty (1) Rubber Seal (enough for four flares's outer edge)  
Qty (6) U-Clip & Flange Screw  
Qty (8) Long Clip & Truss Type-A Screw  
Qty (2) S-Clip & Truss Machine Screw  
Qty (1) Plastic Fastener  
Qty (34) Allen Bolt, Nut & Washer (Hex Key or Torx Bit required)  
Qty (8) Self Tapping Screws (see option B)

### Step 1. Pre-Installation



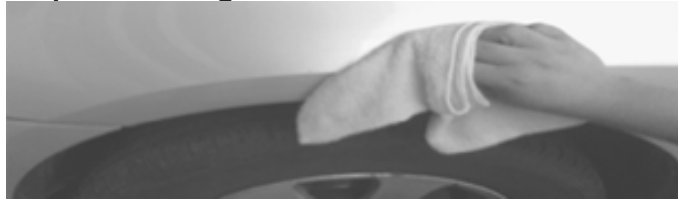
Prefit both driver side and passenger side fender flares to the vehicle before painting or installation. You may remove any moldings, strips or existing flares from the vehicle for fitting or installation.

### Step 2. Painting (optional)



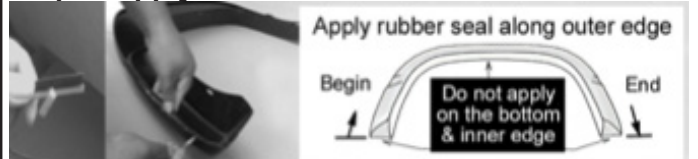
Professional paint or body shop recommended to paint flares. Follow all the paint manufacture specifications to paint the flares. Clean fender flare surfaces with clean water and a mild detergent before painting, do not use lacquer thinner or any solvent based products.

### Step 3. Cleaning



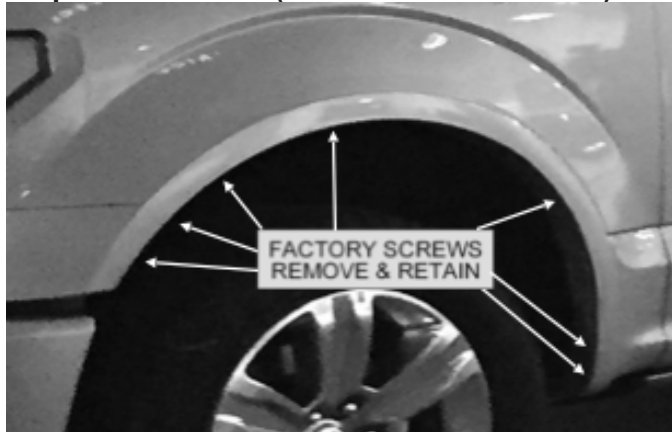
Wash and wipe dry the areas of contact on the vehicle body. Clean the surface and inside edge of the fender flare where the rubber seal is to be attached.

### Step 4. Apply Rubber Seal



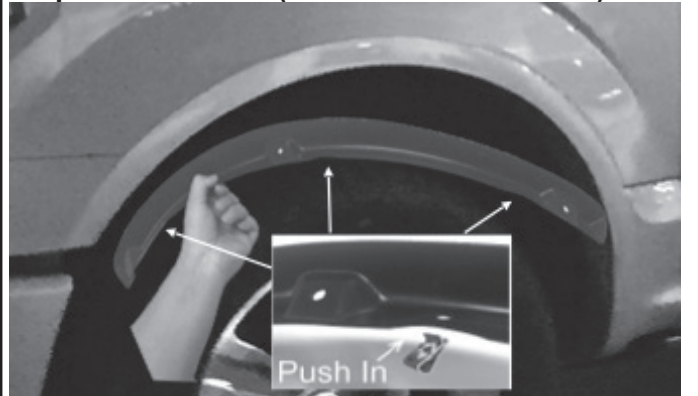
Apply rubber seal to the flare. Start at one end of the flare along the edge that comes in contact with the body panel. Apply pressure on the tape to ensure adhesion, and trim excess rubber seal at the end.

### Step 5. Installation (Left Front Flare Shown)



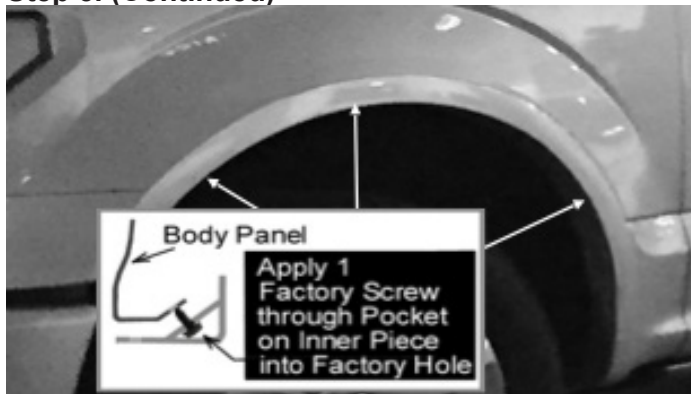
Remove the five existing factory screws with proper wrench. Remove the two rear most existing factory screws with proper wrench and save for reinstallation later.

### Step 6. Installation (Left Rear Flare Shown)

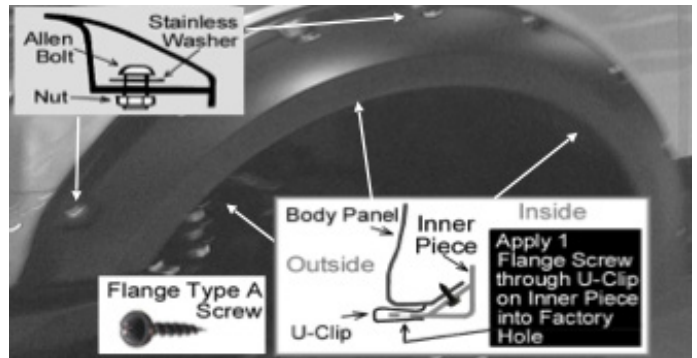


Install 3 U-clips over the holes on the inner piece as shown.

**Step 5. (Continued)**



Ensure to have the right inner piece and knowing the way to install first, and line up the holes on inner piece and 3 uppermost factory holes. Use the proper wrench to reinstall 3 factory screws, through the holes on the inner piece into the factory holes.

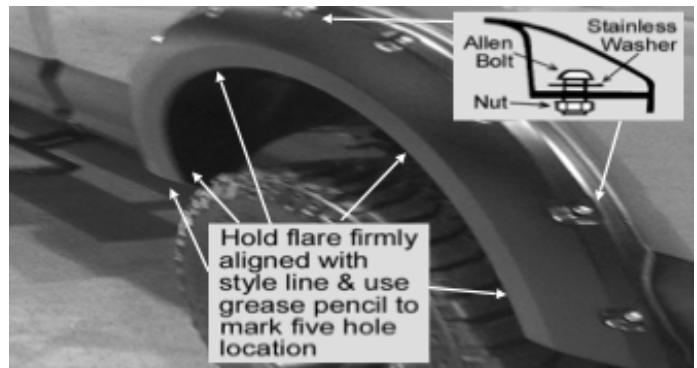


Use Torx Bit to tight allen bolt & nylon nut firmly on every pocket of the fender flares. **DO NOT OVER TIGHTEN!** Apply 3 Flange Screws through inner piece, into U-Clip and secure it to the vehicle on the uppermost holes, as shown.

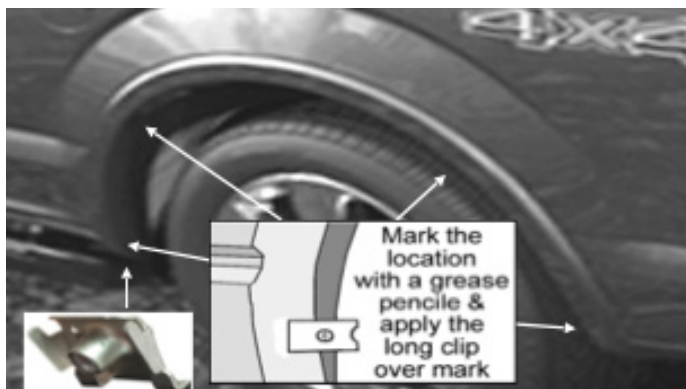
**Step 6. Installation (Left Rear Flare Shown)**



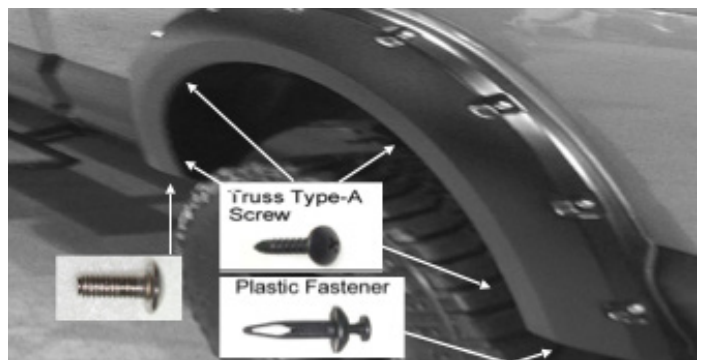
Remove one factory retainer from rear of wheel well (under), and discard.



Use Torx Bit to tighten allen bold & nylon nut firmly on every pocket of hte fender flares. **DO NOT OVER TIGHTEN!** Place the flare on the vehicle with best position, mark the five hole locations into the vehicle.



Remove the flare, apply four long clip over the marks, from inside toward to outside, as shown. Install a S-Clip on the lower front of the rear wheel well, align with the mark made in previous step.



Secure the flare with four Truss Type screws into the long clip, start the two screws on the two topmost holes, as top shown. Apply 1 Truss Machine Screw into the installed S-Clip. Apply one Plastic Fastener into flare and through the same factory hole in step 9.

**Option B:** If condition of fender prevents use of the Push-In Clips you can use the included self tapping screws to secure the flare to the fender.